

Agenda for Pre-ASLIBS2017

Theme : Basic R&D Activity of CLADS/JAEA and recent monitoring of Fukushima Daiich Nuclear Power Station (FINPS)

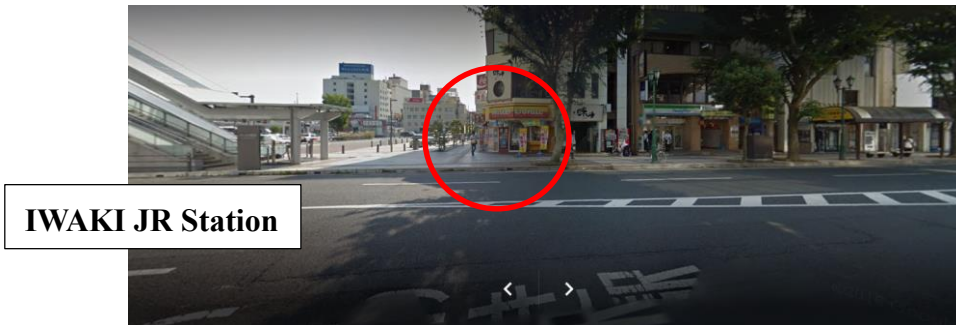
CLADS: Laboratories for Advanced Decommissioning Science

JAEA: Japan Atomic Energy Agency

1. Pickup at IWAKI JR Station

Pickup by Symposium special Bus service (Wins Bus Service) at IWAKI station [09 : 30](#)

Staff will pickup you at the front of “Mr. Donuts”



2. Symposium for Decommissioning

- | | |
|--|---------------|
| 1) Welcome to CLADS/JAEA at Tomioka | 10:30 - 10:35 |
| 2) “Outline of basic R&D of CLADS/JAEA for decommissioning of FINPS”
Dr. Takaumi Kimura, Acting Director General | 10:35 - 11:00 |
| 3) “Basic R&D of LIBS for in-core and in-situ monitoring and recent monitoring results of FINPS by Tokyo Electric Power Co. (TEPCO)”
Dr. Ikuo Wakaida, Group leader, Remote Analytical Technology group | 11:00 - 11:40 |
| 4) CLADS Short Tour | 11:40 - 12:00 |
| 5) Introductions of FINPS Special Tour (Caution and Notice) | 12:00 - 12:10 |
| 6) Lunch (Lunch box will be served) | 12:10 - 12:40 |





3. Special Tour to Fukushima Daiichi Nuclear Power Station

- | | |
|--|---------------|
| 1) Departure to TEPCO F1NPS tour station | 12:50 |
| 2) Introduction and safety education at TEPCO station | 13:00 - 14:00 |
| 3) F1NPS Tour (TEPCO onsite Bus) | 14:00 - 16:00 |
| 4) Return from F1NPS Tour and arrival at TEPCO station | 16:00 |



Fukushima-Daiichi Nuclear Power Plant

Reference: Tokyo Electric Power Company Holdings, Incorporated

4. Return to IWAKI JR station

- | | |
|---|-------|
| Arrival at IWAKI Station by the Symposium special Bus service | 17:00 |
|---|-------|